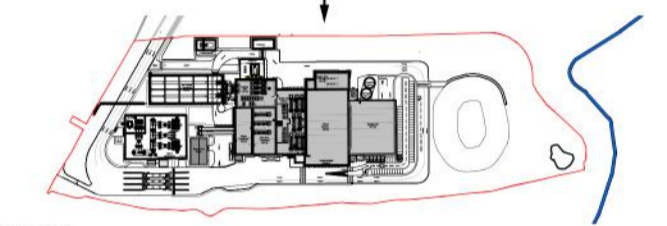


notes :

1. If this drawing has been received electronically it is the recipient's responsibility to print the document to the correct scale.
2. All dimensions are in millimetres unless stated otherwise. It is recommended that information is not scaled off this drawing.
3. This drawing should be read in conjunction with all other relevant drawings and specifications.
4. Information based on drawing reference: 15015 F003.

Key:

- A. Horizontally laid Sinusoidal profile insulated built-up cladding with Colorcoat HPS2008 Ultra coating - Colour 'Terracotta' (matt finish) / RAL 040 40 40
 - B. Horizontally laid microrib profile insulated cladding panel with Colorcoat HPS2008 Ultra coating - Colour 'Albatross' / RAL 240 80 05
 - C. Horizontally laid microrib profile insulated cladding panel with Colorcoat HPS2008 Ultra coating, 1000mm deep bands - Colours random mixture 'Terracotta (matt finish) RAL 040 40 40/ Merlin Grey RAL 180 40 05/ Anthracite (matt finish) RAL 7016/ Hamlet RAL 9002
 - D. Vertically laid Trapezoidal profile insulated cladding panel with Colorcoat HPS2008 Ultra coating - Colour 'Anthracite' (matt finish) / RAL 7016
 - E. Stack - Colour 'Light Grey' / RAL 7035
 - F. Horizontally laid microrib profile cladding sheet with Colorcoat HPS2008 Ultra coating, 1000mm deep bands - Colours random mixture 'Terracotta (matt finish) RAL 040 40 40/ Merlin Grey RAL 180 40 05/ Anthracite (matt finish) RAL 7016/ Hamlet RAL 9002
 - G. Horizontally laid microrib profile insulated cladding panel with Colorcoat HPS2008 Ultra coating - Colour 'Terracotta' (matt finish) / RAL 180 40 05
 - H. Aluminium Louvres to be PPC colour Merlin Grey RAL 180 40 05 / Anthracite (matt finish) RAL 7016
- Polyester powder coated aluminium window frames - Colour 'Anthracite' (matt finish) / RAL 7016
- Metal external handrails and plant support - Galvanised finish.
- Paladin fencing and gates - Colour 'Anthracite' (matt finish) / RAL 7016



Key Plan
Scale @ 1:7000

Drawing for **PLANNING** purposes only

T	Site plan, CEMS platform and louvres updated.	BC	TFH	11.09.18
S	Site drawings revised and updated to show new M&E equipments and site attenuation Pond	PBR	TFH	04.07.18
R	Escape stair updated to be non enclosed stair. Transformer note added. ACC cladding amended.	JT	CMGD	27.02.17
P	Client logos updated. Steam export rack updated as per CNIM drawing. Transformer fence added. Walkway enclosure added. Escape stairs added. Key updated.	JT	CMGD	13.02.17
N	Text and level added	JH	CD	20.01.17
M	Elevations updated to suit 2016 NMA site plan layout.	DDP	CD	03.01.17
L	Updated to suit current site layout receiver from EPC contractor.	MK	JAT	17.11.15
K	Updated as per client comments 26.10.15.	MK	JAT	28.10.15
J	Updated to suit current building layout received from EPC contractor.	DEC	JAT	20.10.15
H	Logo's updated.	LMA	ST	02.08.13
G	Elevations updated. Logo's updated.	A.JL	RS	10.07.13
F	Elevation information, title block and key updated.	JAT	SG	08.10.12
E	E.ON logo added. Building extents clarified.	KRY	PRP	15.02.10
D	Stack colour reference amended.	A.JL	PRP	18.01.10
C	Key and notes updated and minor amendments to drawing.	SMG	PRP	17.12.09
B	Building levels information clarified. Keyplan Updated. Stack height confirmed.	A.JL	PRP	25.11.09
A	Key added. Keyplan updated. Building elements labelled.	A.JL	PRP	19.11.09

rev	amendments	by	ckd	date
-----	------------	----	-----	------



Sherwood House
Sherwood Avenue
Newark, Nottinghamshire
NG24 1QZ

T +44 (0) 1636 605 700
F +44 (0) 1636 610 696
W www.rpsgroup.com
E rpsnewark@rpsgroup.com



Client
Project **Kemsley Sustainable Energy Plant**

Title **North West Elevation**

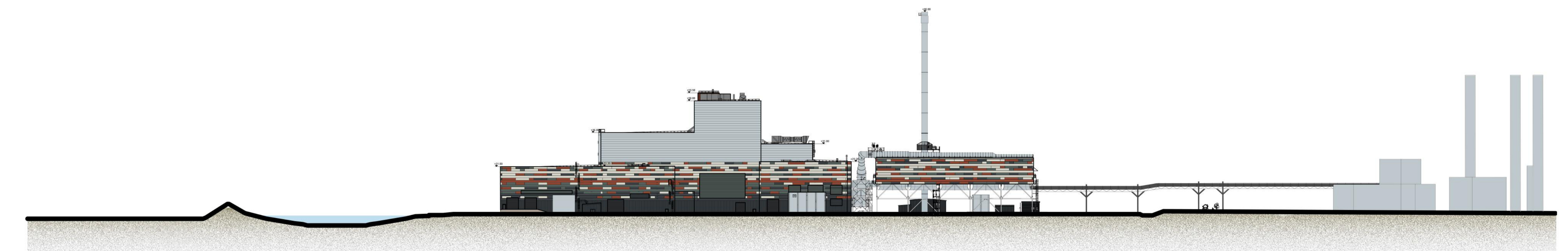
Drawing Status	Date Created	Drawing Scale
Preliminary	11.11.09	1:500
Project Leader	Drawn By	Initial Review
AWY	SMG	RS

Drawing Number
16315 / A1 / P / 0113 T

FIGURE 4.7D



North West Elevation
Scale 1:500



Swale Estuary

Proposed Sustainable Energy Plant

Existing Paper Mill
(with indicative heights)

North West Site Section
Scale 1:1000

